



Location Intelligence

Geographic Information Systems

MapInfo Discover™ 2016 and MapInfo Discover™ 3D 2016 64-bit bundles

Powerful geospatial capabilities designed for the natural resources industry

Product overview

The latest version of MapInfo Discover 64-bit packs a punch, incorporating the GIS industry's most advanced raster grid analysis solution, MapInfo Pro Advanced. Now you can analyse and manipulate high-resolution imagery and grids with ease.

Featuring a modern new ribbon interface, it also delivers all of the exciting capabilities of MapInfo Pro 64-bit, including fast and dynamic map creation, as well as extensive new interface and window management controls.

Product description

Built on the powerful MapInfo Pro GIS, MapInfo Discover is the comprehensive and essential package for the compilation, mapping and analysis of spatial geosciences data, whether you are conducting mineral exploration, hydrological analysis or environmental assessments.

With MapInfo Discover 3D, you can effortlessly transition MapInfo Pro datasets into an intuitive 3D environment. Rapidly visualise, evaluate and model your drillhole and related datasets in true 3D, and then dynamically test your theories.

Benefits

- Seamless integration of geochemical, geological, environmental, geophysical, drilling and cartographic datasets into a single GIS environment
- Extensive analytical capabilities for temporal, geostatistical, graphical and spatial trend identification and data normalisation
- Fast and dynamic creation of high-quality professional cartographic output
- Create, annotate and analyse detailed drillhole cross-sections, long-sections and plans.
- Cutting-edge raster grid interpolation and manipulation capabilities, including support for multi-band and multi-resolution grids
- Powerful 3D visualisation, modelling and analysis

Product updates

MapInfo Discover 2016:

- GPS Connectivity for accurate and real-time field data capture
- Comprehensive support for the Multi-Resolution Raster (.MRR) format within most MapInfo Discover tools, including multi-banded rasters
- New Raster group on the ANALYSIS tab incorporates Geophysical (FFT) filters, Contour Labelling and the Contour Label Positioner
- The drillhole module now implements MapInfo Pro 16.0's new Geopackage as the core database, natively storing your drillhole data as a complete 3D geometry dataset
- Fresh new MapInfo Discover 3D icons
- Support for Acquire data model 4.5.4

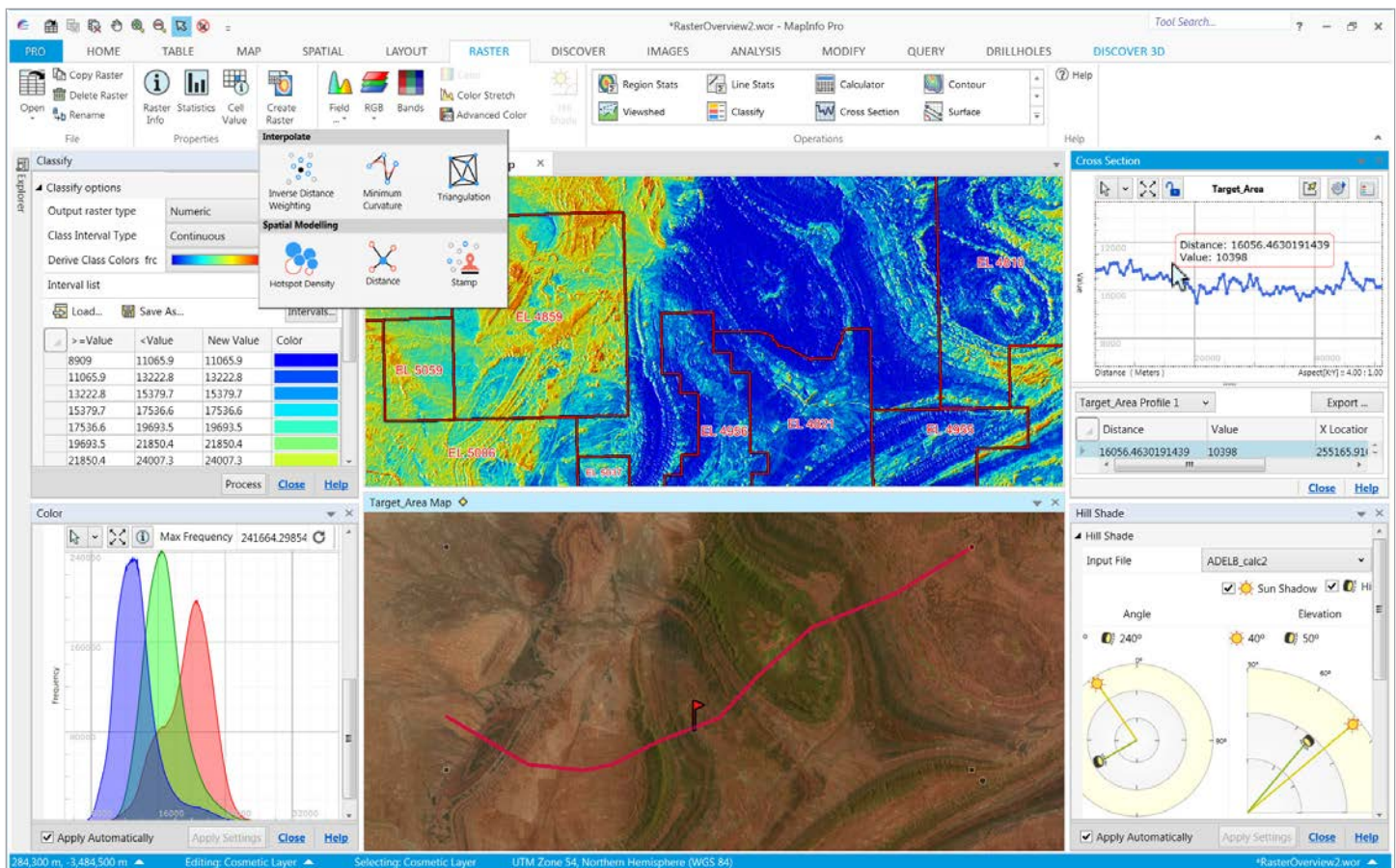
Experience the power of MapInfo Pro 16.0 64-bit:

- New interactive time-saving thematic mapping with a dynamic THEME ribbon tab. This also now provides Colour Brewer templates, designed for clarity and accessibility
- Improved labelling and layout designer behaviours
- Added Web Map Tile Service (WMTS) support, as well as updated Web Feature Service (WFS) 2.0 support.
- Improved Gridlines options, including longitude/latitude label formats, as well as new map-edge specific label placement options
- Numerous other improvements

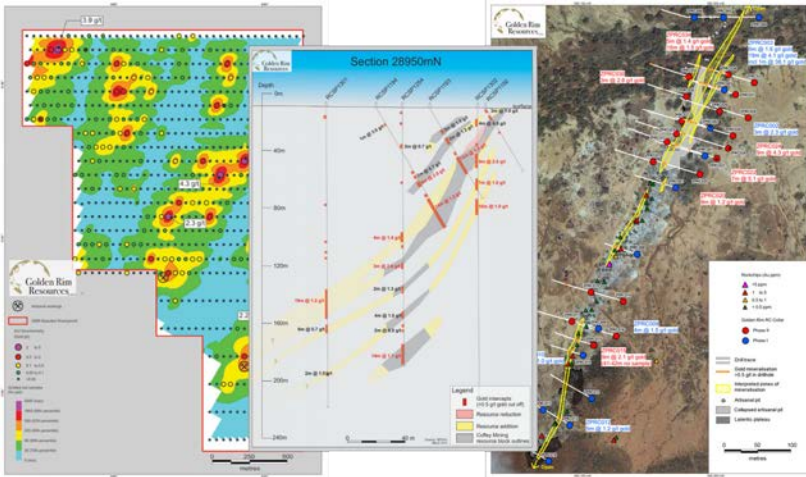
Cutting-edge raster grid analysis with MapInfo Pro Advanced:

Version 16.0 boasts numerous impressive capabilities including:

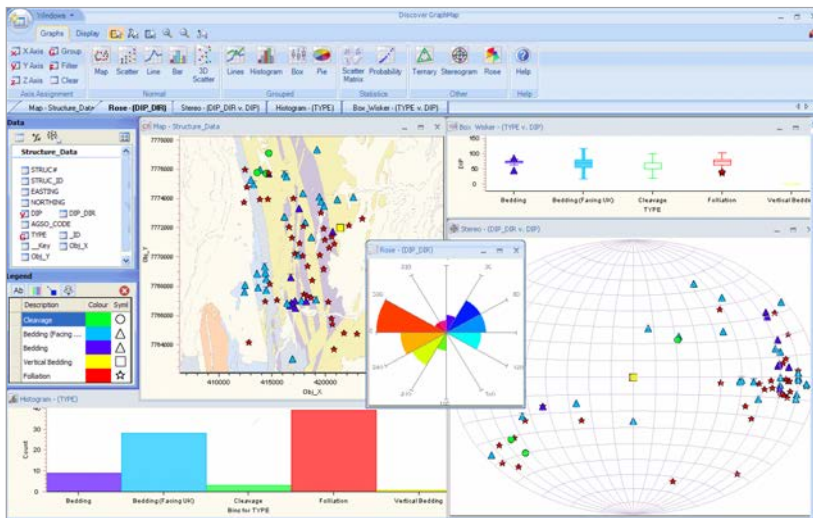
- Multi-file gridding (such as LIDAR data)
- Dynamic raster legends
- Nearest and Natural Neighbour interpolation methods
- Volume calculations both between rasters, as well as above/below a plane of constant value
- Interpolation enhancements such as orientated search ellipses, data conditioning and options for output raster geometry and clipping
- The ability to create and apply custom grid display templates
- Numerous additional raster formats supported
- Significant performance enhancements



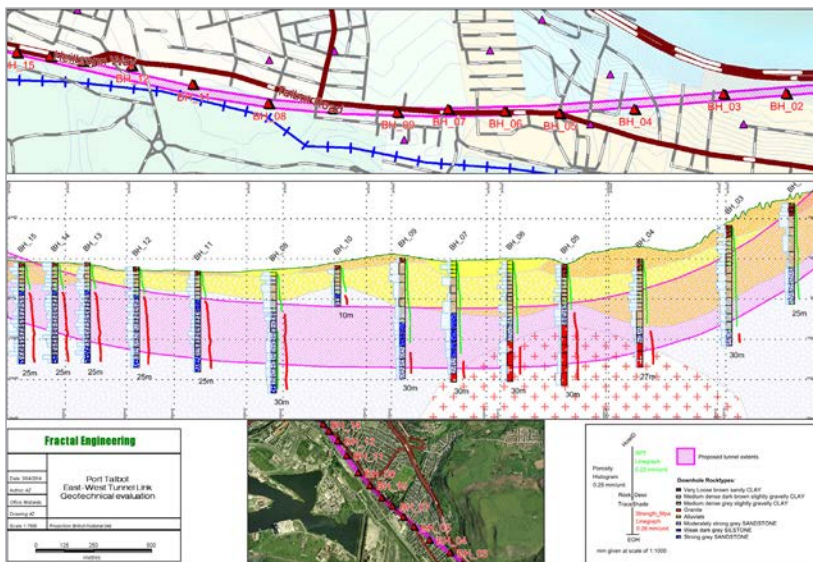
The new MapInfo Pro Advanced is a huge step forward in performance and usability when working with high resolution raster grid data at the largest scales.



Convey your message effectively with great looking output, whether showing the results of a soil-sampling program, or prospect-scale drilling (images courtesy of Golden Rim Resources).



Powerful graphical and statistical analysis capabilities ensure that you leverage the full value of your datasets.



Incorporate and assess geotechnical (e.g. road tunnel design) and environmental (e.g. pollution or salinity monitoring) drilling within the MapInfo Pro GIS environment.

The essential GIS

MapInfo Discover is ideal at any stage of exploration; from regional evaluation and initial tenement acquisition, through to detailed drilling and resource-modelling.

Compile

Make informed decisions based on an integrated and accurate view all of your data, with support for well over 100 industry-standard formats, including connectivity with popular geoscience applications (e.g. Leapfrog, Datamine Studio, Acquire and gINT), as well as image rectification, re-projection and batch ECW import capabilities.

Analyse

Maximise the value of your data with a wealth of advanced analytical functionality, whether you are performing trend or anomaly identification, drillhole targeting, multi-element analysis or remote sensing. Datasets can be assessed dynamically in statistical, spatial, temporal and graphical views.

The new MapInfo Pro Advanced provides a comprehensive and super-fast set of raster grid interpolation, modification and analysis tools, equally capable at the prospect or continental scales.

Boreholes, drillholes and trenches can all be visualized and analysed as detailed and easily updated cross-sections and plans.

Map

Produce high quality output more quickly and easily than ever before with the new and intuitive Layout Designer. Ensure professional results with a vast range of adornments, from embedded 3D views and location plans, through to map grids and titleblocks. MapInfo Pro™ provides numerous output options, such as hard copy printing, exporting to a variety of formats and publishing as interactive PDFs.

True 3D visualisation, interpretation and modelling

MapInfo Discover™ 3D seamlessly extends the MapInfo Pro™ GIS into 3D. Visualising your data in 3D is easy, whether draping aerial photography over a terrain surface, assessing drillholes or viewing geochemical datasets. MapInfo Discover 3D is also projection-savvy, with on-the-fly dataset reprojection ensuring a comparable experience to MapInfo Pro.

- Gain a fresh perspective on your data, identifying and analysing subtle trends in 3D simply not apparent in the 2D environment.

- Powerful modelling capabilities, from solid wireframing and extrusions through to block/voxel model interpolation.
- Intuitively navigate the 3D environment with our new onscreen controls, or plug in a 3DConnexion SpaceNavigator™ controller for instinctive 'fly-through' navigation.
- Real-time drillhole planning.
- Share 3D environments with the free Discover Viewer.
- Produce eye-catching and immersive movies of your project with dynamic data content.

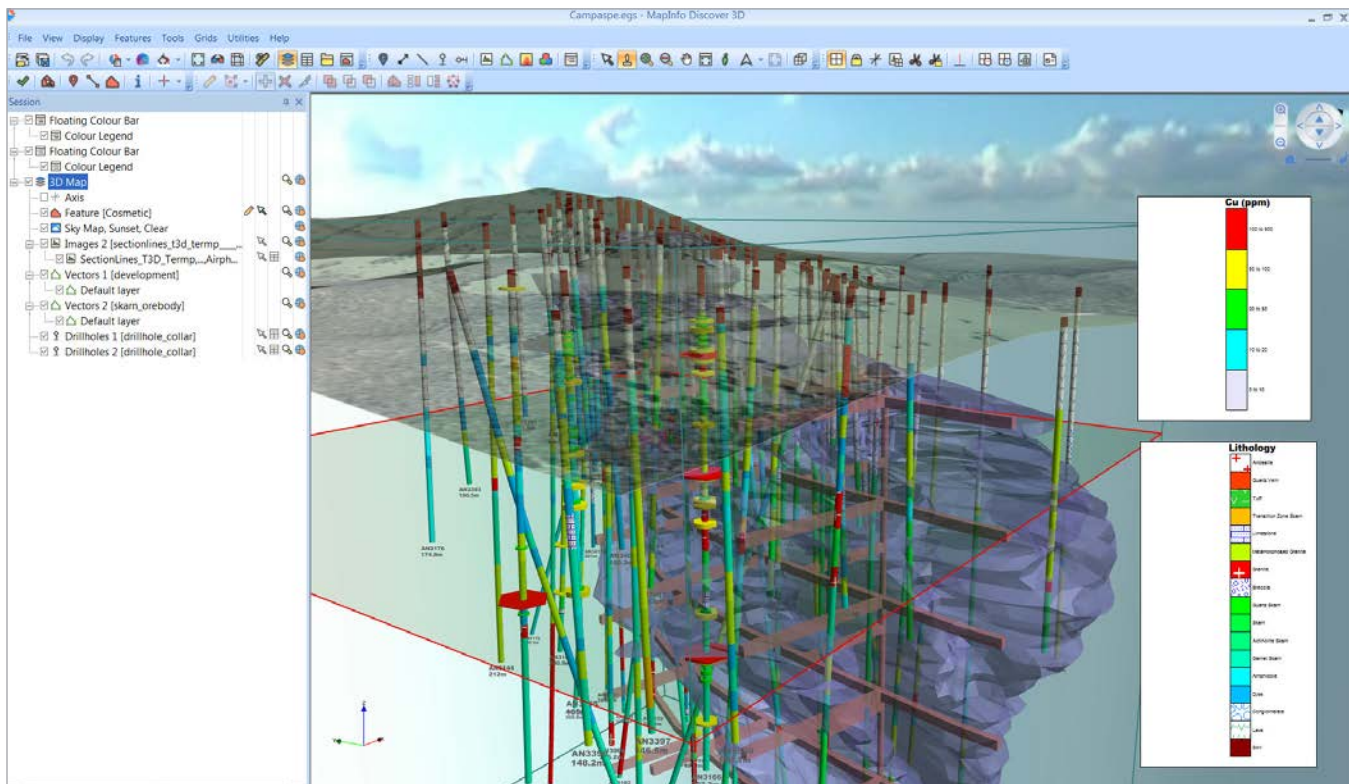
Specifications

The MapInfo Discover 2016 64-bit Bundle installs and licenses the following components:

- MapInfo Pro Advanced 16.0 (including the powerful MapInfo Pro Raster)
- MapInfo Premium Services
- MapInfo Discover 2016 and
- MapInfo Discover 3D 2016 (additional purchase option)

Supported Operating Systems:

- Windows 10 (64-bit)
- Windows 8.1 (64-bit)
- Windows 8 (64-bit)
- Windows 7 (64-bit)



Explore, model and evaluate complex relationships in your project data in true and immersive 3D.

For more information, call
+61 2 9475 3500 or visit us
online: pitneybowes.com/au

Asia Pacific/Australia
+61 2 9475 3500
pb.apac@pb.com

Europe/United Kingdom
0800 840 0001
pbsoftware.emea@pb.com

United States
800 327 8627
pbsoftware.sales@pb.com

Canada
800 268 3282
pbsoftware.canada.sales@pb.com



Pitney Bowes, the Corporate logo, MapInfo Discover™ and MapInfo Pro™ are trademarks of Pitney Bowes Inc. or a subsidiary. All other trademarks are the property of their respective owners.
© 2016 Pitney Bowes Inc. All rights reserved.



16DCS07688_ANZ